




Michigan-
PORCUPINE MOUNTAINS

Michigan's Upper Peninsula.



Adventurers Welcome

Official Travel Guide



www.porcupinemountains.com

Find Yourself in the Porcupine Mountains

Located on the shores of Lake Superior in Michigan's Upper Peninsula, the Porcupine Mountains are home to the largest tract of old-growth hardwood forests west of the Adirondacks. There's no better place in the Midwest to experience a true taste of wilderness.

Visit the hundreds of spectacular waterfalls. Go beachcombing along miles of pristine, sandy beaches. Tour lighthouses and historic copper mines. See the awe-inspiring Lake of the Clouds. Paddle your sea kayak along Lake Superior's sculpted shores. Mountain bike, hike, snowshoe and cross-country ski hundreds of miles of trails. Cast your line for trout and salmon.

Your adventure begins at porcupinemountains.com.

Visiting the Porcupine Mountains' virgin forests, free-flowing rivers and undisturbed beaches is like taking a step back in time. However, area motels, cabins, inns, restaurants and retailers provide you with all the modern conveniences.

Ontonagon

This village sits on Lake Superior, just 15 minutes east of the Porcupine Mountains Wilderness State Park. You'll find five lodging options, five restaurants and two places to get fuel.

Silver City

Located on Lake Superior along the eastern border of the Porcupine Mountains Wilderness State Park, Silver City is home to two lodging options, three restaurants, and several shops.

White Pine

The town of White Pine is located on Highway 64, less than ten minutes south of Silver City. Adventurers, explorers and dreamers will find two lodging options, two restaurants, a bowling alley and fuel.

Four spectacular seasons, wilderness adventure, majestic sunsets and relaxation await you in the Porcupine Mountains. Spring brings life to the forests. Rivers and streams begin the rush to create hundreds of thunderous waterfalls. Summer turns the landscape lush and green, calling to the explorer within to experience the vast wilderness and waterways. As autumn arrives, the woodlands transform into breathtaking shades of rustic orange, ruby red, and warm gold, mingled with the contrasting rich emerald of the sturdy pine.

Winter in the Porcupine Mountains is like nowhere else in the Midwest. The terrain becomes a frozen tundra covered in pure white snow. An average year will bring over 200 inches of glistening white powder, beckoning the alpine and cross-country skier. Snowshoers have mile upon mile of unspoiled territory to discover. Hundreds of miles of groomed trails entice the snowmobiler to return year after year. From snow-covered hemlocks, blue ice and ice caves to rugged hillsides and frozen waterfalls, winter is a unique experience every time you visit.

Don't let the snow scare you away! The temperatures are fairly mild and the crews keep our roadways cleared for travel. For those looking for a winter escape, the Porcupine Mountains is the perfect place to rejuvenate. Enjoy the peace and tranquility as you watch the greatest of Great Lakes begin to freeze and the ice volcanoes form. Although the area gets tremendous snowfall each year, the average daytime temperature remains in the 20's. This makes the Porcupine Mountains ideal for winter activities.

Average Seasonal Daily High Temperatures

Winter	25 degrees
Spring	54 degrees
Summer	79 degrees
Fall	56 degrees



THE WILDS
OF MICHIGAN

PURE MICHIGAN
Your trip begins at michigan.org

Cover Photo Credit: Jeff Nottingham
Page 2 Photo Credit: Rick Varecha

This publication was produced by Pilch & Barnet, Inc. (608-242-8895, www.pilchbarnet.com) for the Porcupine Mountains Convention and Visitors Bureau (906-884-2047) in 2012.

Trailblazers

If you are hungry for backcountry trails and breathtaking vistas, the Porcupine Mountains welcome you. The 92 square miles that make up the Porcupine Mountains Wilderness State Park are a trail trekker's paradise. The park offers more than 87 miles of trails for hiking, mountain biking and birdwatching. The Park abuts the Ottawa National Forest, boasting nearly a million additional acres to explore.

Hike and bike along bluffs overlooking Lake Superior. Glide through glades of thick hemlocks. Snowshoe gorgeous woodland trails that rival any winter trails in the Midwest. Enjoy sweeping hilltop vistas of Lake Superior. See waterfalls transformed by ice.



Photo Credit: Tim Feathers

A number of trails offer rugged terrain. But, you'll also find trails that are suitable for trailblazers of all ages. On every trail, you'll find incredible scenery and abundant wildlife viewing opportunities.

The Porcupine Mountains get an incredible amount of snow each winter—more than 200 inches—making the area one of the best places in the country for snowmobiling and downhill skiing. Ride 350 miles of Ontonagon County snowmobile trails that link with thousands more miles of Upper Peninsula trails. Hit the slopes at the Porcupine Mountains Ski Area, which offers 42 outstanding ski runs. Or, take on the 42 km of cross-country ski trails in the state park or any of the other cross-country trails located throughout the county.

Anglers, boaters and paddlers love the Porcupine Mountains. Jig deep water for lake trout. Go fly fishing for dazzling brookies on a tiny forest stream. Cast for walleye, smallmouth bass and northern pike on area lakes and rivers. Numerous boat launches provide easy access for anglers, boaters, canoeists and kayakers.

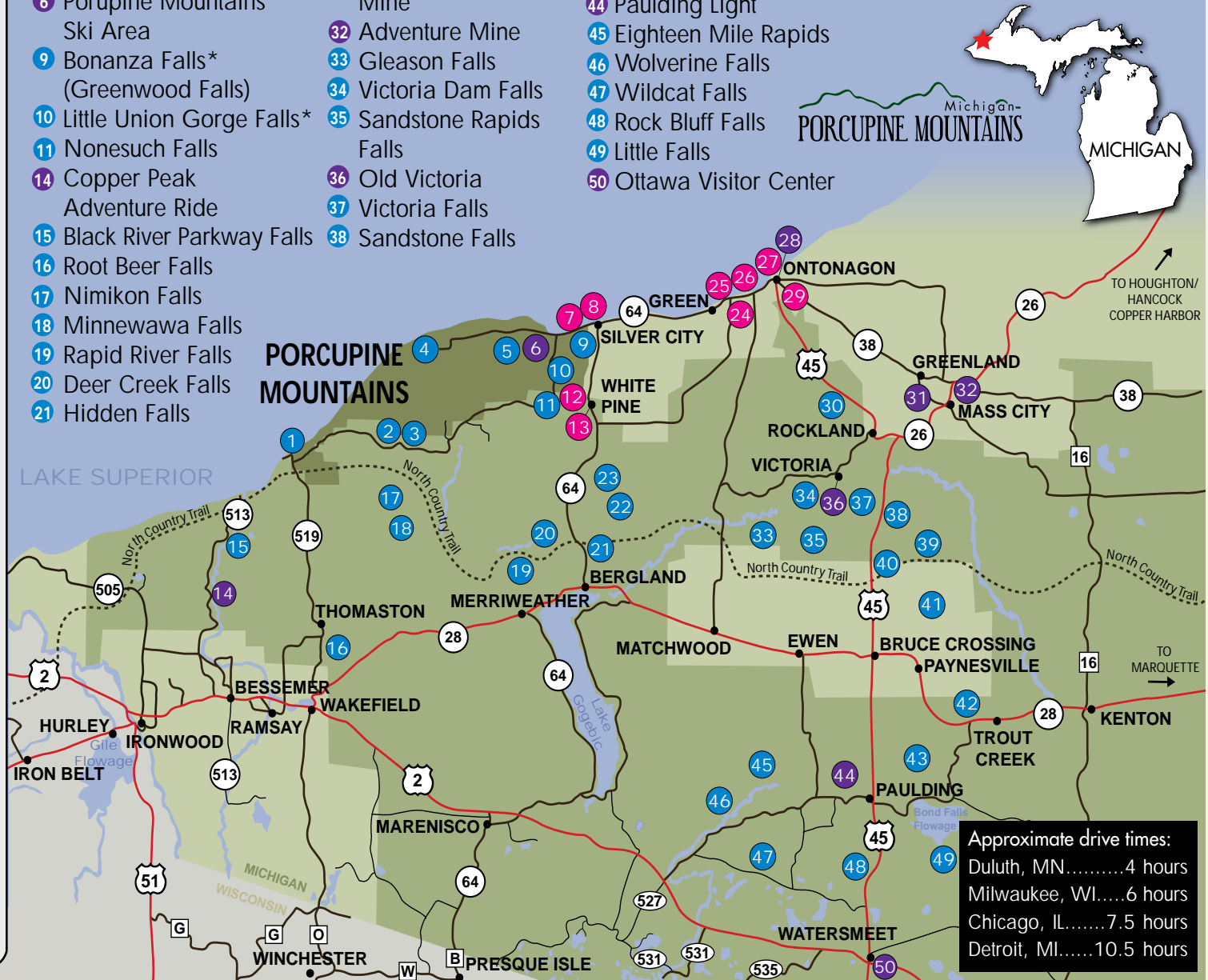
Lodging Partners:

- 7 Mountain View Lodges**
34042 State Hwy M107, Silver City
906-885-5256 • mountainviewlodges.com
 - 8 Americinn Porcupine Mountains**
120 Lincoln Ave., Silver City
906-885-5311 • silvercitymilodge.com
 - 12 Porcupine Lodge**
1033 Michigan Ave., White Pine
1-800-865-9305 • porcupinelodge.com
 - 13 The Konteka**
35362 Mall Cir., White Pine
906-885-5170 • thekonteka.com
 - 24 Sunshine Motel, Cabins & Campground**
24077 State Hwy M-64 W, Ontonagon
906-884-2187
ontonagon.net/sunshinemotel
 - 25 Superior Shores Resort**
26156 State Hwy M-64 W, Ontonagon
906-884-2653 • superior-shores-resort.com
 - 26 Peterson's Chalet Cottages**
22608 Lakeshore Rd., Ontonagon
906-884-4230 • petersonscottages.com
 - 27 Scott's Superior Inn & Cabins**
22554 Lakeshore Rd., Ontonagon
906-884-4866 • westernup.com/scotts
 - 29 Inn Towne Motel**
314 Chippewa St., Ontonagon
906-884-2100 • onto-intowne.com
- Wi-Fi available at all lodging locations*

- | | | |
|------------------------------------|---------------------------|--------------------------|
| 1 Presque Isle Falls | 22 Cascade Falls | 39 O-Kun-De-Kun Falls* |
| 2 Greenstone Falls | 23 Little Trap Falls | 40 Unnamed Falls |
| 3 Overlooked Falls | 28 Ontonagon Lighthouse | 41 Three Rapids Falls |
| 4 Lake of the Clouds | 30 Irish Rapids Falls | 42 Agate Falls |
| 5 Trap Falls (Epidote Falls) | 31 Caledonia Copper Mine | 43 Bond Falls* |
| 6 Porcupine Mountains Ski Area | 32 Adventure Mine | 44 Paulding Light |
| 9 Bonanza Falls* (Greenwood Falls) | 33 Gleason Falls | 45 Eighteen Mile Rapids |
| 10 Little Union Gorge Falls* | 34 Victoria Dam Falls | 46 Wolverine Falls |
| 11 Nonesuch Falls | 35 Sandstone Rapids Falls | 47 Wildcat Falls |
| 14 Copper Peak Adventure Ride | 36 Old Victoria | 48 Rock Bluff Falls |
| 15 Black River Parkway Falls | 37 Victoria Falls | 49 Little Falls |
| 16 Root Beer Falls | 38 Sandstone Falls | 50 Ottawa Visitor Center |
| 17 Nimikon Falls | | |
| 18 Minnewawa Falls | | |
| 19 Rapid River Falls | | |
| 20 Deer Creek Falls | | |
| 21 Hidden Falls | | |

Map Key

- Lodging Partner
- Porcupine Mountains Wilderness State Park
- Ottawa National Forest
- Waterfall (*most frequented)
- Attraction
- North Country Trail



Approximate drive times:
 Duluth, MN.....4 hours
 Milwaukee, WI.....6 hours
 Chicago, IL.....7.5 hours
 Detroit, MI.....10.5 hours

Explorers

Do you love discovering new Porcupine Mountains waterfalls? Try waterfall bagging. Visit as many waterfalls as you can and share your pictures with other waterfall enthusiasts. Learn more at waterfallbagging.com.

The Porcupine Mountains area has hundreds of waterfalls, including more than 90 waterfalls in the Porcupine Mountains Wilderness State Park. In the springtime, the streams and rivers are at their highest levels, providing an awe-inspiring spectacle of rushing water. During the summer, each waterfall becomes an idyllic garden scene amid the lush green forest. Fall brings the visual backdrop of the changing leaves. And in the winter, the waterfalls become mesmerizing ice sculptures.

Photo Credit: Rick Varecha

Dreamers

What makes the Porcupine Mountains special? There's no better place in the Midwest to take refuge from the hustle and bustle of everyday life.

Wildlife viewing and birdwatching in the Porcupine Mountains is second to none. The pristine forests support black bear, deer, gray wolves, river otters and even moose, as well as rare woodland plants that depend on the old-growth forest habitat that abounds here.

For many visitors to the Porcupine Mountains, it is the awe-inspiring waterscapes and unspoiled shores of Lake Superior that bring them back, year after year. Beach combing is a favorite activity. You'll find driftwood, agates, rocks of every shape and size, and surprising treasures. For an unforgettable vacation, experience a campfire on the beach while gazing at the sunset. As the sky becomes inky black, one by one the twinkling stars light up the night. Keep an eye out for the Northern Lights!

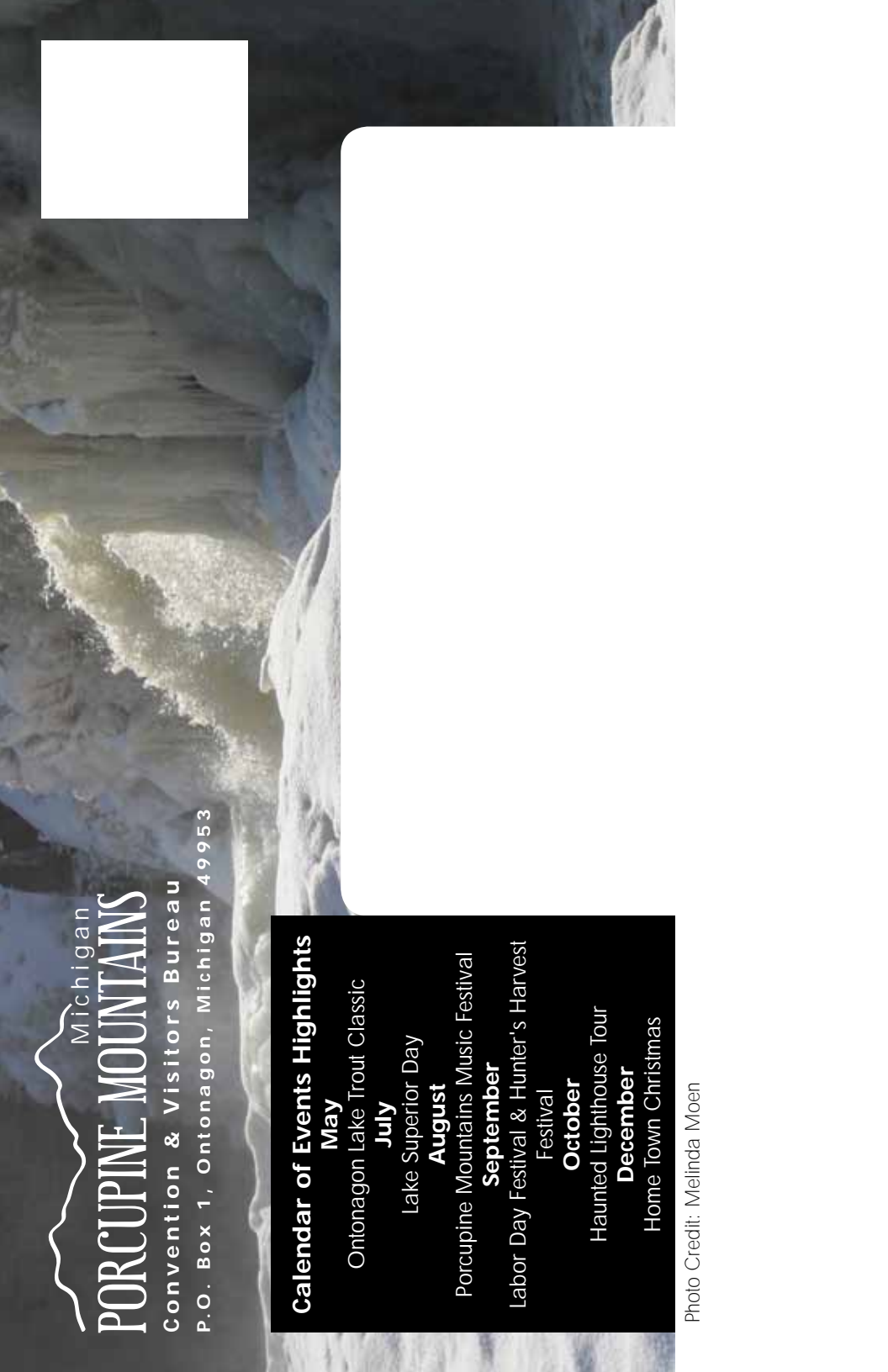
The Lake of the Clouds is perhaps the most photographed feature in the Porcupine Mountains region. No matter what the season, it is a truly breathtaking sight to behold. The best view of the lake and the surrounding hills is from an easily accessible boardwalk just off 107th Engineers Memorial Highway.

The lighthouses, mines and other historic sites in the Porcupine Mountains tell the story of the communities you see today. Stop by the Ontonagon County Historical Museum to take a tour of the Ontonagon Lighthouse. Visit one of the historic mines to learn about the area's long tradition of mining copper, silver and iron.

Take an auto or motorcycle tour of the Porcupine Mountains. Wind your way around ancient hills and discover a landscape like no other. For suggested motorcycle and auto tour options, visit porcupinemountains.com.

Visit porcupinemountains.com for overnight package specials, travel itineraries and complete planning information.





Michigan
PORCUPINE MOUNTAINS
Convention & Visitors Bureau
P.O. Box 1, Ontonagon, Michigan 49953

Calendar of Events Highlights

May

Ontonagon Lake Trout Classic

July

Lake Superior Day

August

Porcupine Mountains Music Festival

September

Labor Day Festival & Hunter's Harvest

Festival

October

Haunted Lighthouse Tour

December

Home Town Christmas

Photo Credit: Melinda Moen